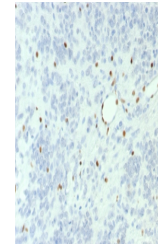


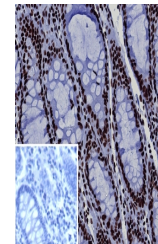
## Product Datasheet

### BRG1 Antibody / SMARCA4 (orb1824832)

<b>Description</b>	The SWI-SNF complex is involved in the activation of transcription via the remodeling of nucleosome ...
<b>Species/Host</b>	Rabbit
<b>Reactivity</b>	Human
<b>Conjugation</b>	Unconjugated
<b>Tested Applications</b>	ELISA, IHC-P, WB
<b>Immunogen</b>	A recombinant partial protein sequence (within amino acids 200-400) from the human protein was used as the immunogen for the BRG1 antibody.
<b>Storage</b>	Aliquot the BRG1 antibody and store frozen at -20°C or colder. Avoid repeated freeze-thaw cycles.
<b>Note</b>	For research use only
<b>Formula</b>	0.2 mg/ml in 1X PBS with 0.1 mg/ml BSA (US sourced), 0.05% sodium azide
<b>Isotype</b>	Rabbit IgG, kappa
<b>Clonality</b>	Recombinant
<b>Uniprot ID</b>	<b>P51532</b>
<b>Hazard Information</b>	This BRG1 antibody is available for research use only.
<b>Dilution Range</b>	ELISA (Order BSA-free format for coating),Western blot: 1-2ug/ml,Immunohistochemistry (FFPE): 1-2ug/ml for 30 min at RT
<b>Expiration Date</b>	12 months from date of receipt.



IHC staining of FFPE human ovarian small...



IHC staining of FFPE human colon tissue ...