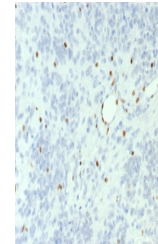


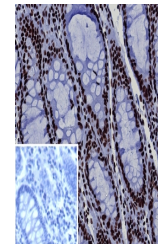
Product Datasheet

BRG1 Antibody / SMARCA4 (orb1824831)

Description	The SWI-SNF complex is involved in the activation of transcription via the remodeling of nucleosome ...
Species/Host	Rabbit
Reactivity	Human
Conjugation	Unconjugated
Tested Applications	ELISA, IHC-P, WB
Immunogen	A recombinant partial protein sequence (within amino acids 200-400) from the human protein was used as the immunogen for the BRG1 antibody.
Storage	Aliquot the BRG1 antibody and store frozen at -20°C or colder. Avoid repeated freeze-thaw cycles.
Note	For research use only
Formula	0.2 mg/ml in 1X PBS with 0.1 mg/ml BSA (US sourced), 0.05% sodium azide
Isotype	Rabbit IgG, kappa
Clonality	Recombinant
Uniprot ID	P51532
Hazard Information	This BRG1 antibody is available for research use only.
Dilution Range	ELISA (Order BSA-free format for coating),Western blot: 1-2ug/ml,Immunohistochemistry (FFPE): 1-2ug/ml for 30 min at RT
Expiration Date	12 months from date of receipt.



IHC staining of FFPE human ovarian small...



IHC staining of FFPE human colon tissue ...