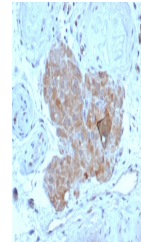


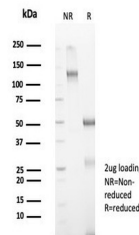
Product Datasheet

AMH Antibody / Anti-Muellerian Hormone (orb1824813)

Description	The transforming growth factor beta (TGF beta) superfamily is composed of numerous growth and differ...
Species/Host	Mouse
Reactivity	Human
Conjugation	Unconjugated
Tested Applications	IHC-P
Immunogen	A recombinant fragment of the C-terminus of the human protein (within amino acids 460-560) was used as the immunogen for the Anti Mullerian Hormone antibody.
Storage	Aliquot the Anti Mullerian Hormone antibody and store frozen at -20°C or colder. Avoid repeated freeze-thaw cycles.
Note	For research use only
Formula	0.2 mg/ml in 1X PBS with 0.1 mg/ml BSA (US sourced), 0.05% sodium azide
Isotype	Mouse IgG1, kappa
Clonality	Monoclonal
Uniprot ID	P03971
Hazard Information	This Anti Mullerian Hormone antibody is available for research use only.
Dilution Range	Immunohistochemistry (FFPE): 1-2ug/ml for 30 min at RT
Expiration Date	12 months from date of receipt.



IHC staining of FFPE human testis tissue...



SDS-PAGE analysis of purified, BSA-free ...