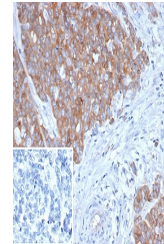


Product Datasheet

BRAF Antibody (orb1824810)

Description	The BRAF gene encodes a cytoplasmic serine-threonine kinase, which initiates the activation of the m...
Species/Host	Mouse
Reactivity	Human
Conjugation	Unconjugated
Tested Applications	IHC-P
Immunogen	A recombinant fragment of human HMG20B protein was used as the immunogen for the BRAF antibody.
Storage	Aliquot the BRAF antibody and store frozen at -20°C or colder. Avoid repeated freeze-thaw cycles.
Note	For research use only
Formula	0.2 mg/ml in 1X PBS with 0.1 mg/ml BSA (US sourced), 0.05% sodium azide
Isotype	Mouse IgG1, kappa
Clonality	Monoclonal
Uniprot ID	Q9P0W2
Hazard Information	This BRAF antibody is available for research use only.
Dilution Range	Immunohistochemistry (FFPE): 1-2ug/ml for 30 min at RT
Expiration Date	12 months from date of receipt.



IHC staining of FFPE human ovarian cancer...