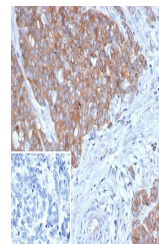


## Product Datasheet

### BRAF Antibody (orb1824809)

<b>Description</b>	The BRAF gene encodes a cytoplasmic serine-threonine kinase, which initiates the activation of the m...
<b>Species/Host</b>	Mouse
<b>Reactivity</b>	Human
<b>Conjugation</b>	Unconjugated
<b>Tested Applications</b>	IHC-P
<b>Immunogen</b>	A recombinant fragment of human HMG20B protein was used as the immunogen for the BRAF antibody.
<b>Storage</b>	Aliquot the BRAF antibody and store frozen at -20°C or colder. Avoid repeated freeze-thaw cycles.
<b>Note</b>	For research use only
<b>Formula</b>	1 mg/ml in 1X PBS; BSA free, sodium azide free
<b>Isotype</b>	Mouse IgG1, kappa
<b>Clonality</b>	Monoclonal
<b>Uniprot ID</b>	<b>Q9P0W2</b>
<b>Hazard Information</b>	This BRAF antibody is available for research use only.
<b>Dilution Range</b>	Immunohistochemistry (FFPE): 1-2ug/ml for 30 min at RT
<b>Expiration Date</b>	12 months from date of receipt.



IHC staining of FFPE human ovarian cancer...