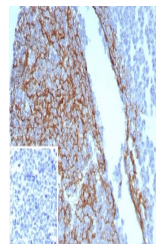


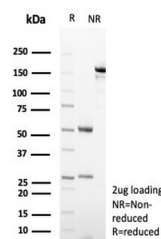
## Product Datasheet

### CD23 Antibody (orb1824795)

|                            |   |
|----------------------------|---|
| <b>Description</b>         | CD23 (FCE2) is a type II integral membrane glycoprotein that is expressed on mature B cells, monocy...                                      |
| <b>Species/Host</b>        | Rabbit  |
| <b>Reactivity</b>          | Human   |
| <b>Conjugation</b>         | Unconjugated  |
| <b>Tested Applications</b> | IHC-P   |
| <b>Immunogen</b>           | A recombinant partial protein sequence (within amino acids 200-300) from the human protein was used as the immunogen for the CD23 antibody. |
| <b>Storage</b>             | Aliquot the CD23 antibody and store frozen at -20°C or colder. Avoid repeated freeze-thaw cycles.   |
| <b>Note</b>                | For research use only   |
| <b>Formula</b>             | 0.2 mg/ml in 1X PBS with 0.1 mg/ml BSA (US sourced), 0.05% sodium azide   |
| <b>Isotype</b>             | Rabbit IgG, kappa   |
| <b>Clonality</b>           | Recombinant   |
| <b>Uniprot ID</b>          | <b>P06734</b>   |
| <b>Hazard Information</b>  | This CD23 antibody is available for research use only.  |
| <b>Dilution Range</b>      | Immunohistochemistry (FFPE): 1-2ug/ml for 30 min at RT  |
| <b>Expiration Date</b>     | 12 months from date of receipt.   |



IHC staining of FFPE human tonsil tissue...



SDS-PAGE analysis of purified, BSA-free ...