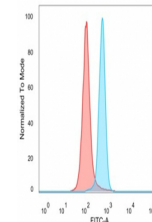


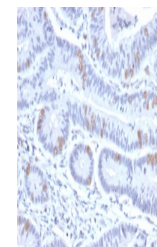
Product Datasheet

BRAF35 Antibody / HMG20B (orb1824789)

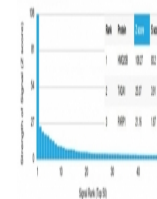
Description	Required for correct progression through G2 phase of the cell cycle and entry into mitosis. Required...
Species/Host	Mouse
Reactivity	Human
Conjugation	Unconjugated
Tested Applications	ELISA, FACS, IHC-P
Immunogen	A synthetic peptide corresponding to human SMARCE1-related protein was used as the immunogen for the HMG20B antibody.
Storage	Aliquot the HMG20B antibody and store frozen at -20°C or colder. Avoid repeated freeze-thaw cycles.
Note	For research use only
Formula	0.2 mg/ml in 1X PBS with 0.1 mg/ml BSA (US sourced), 0.05% sodium azide
Isotype	Mouse IgG1, kappa
Clonality	Monoclonal
Uniprot ID	Q9P0W2
Hazard Information	This HMG20B antibody is available for research use only.
Dilution Range	ELISA (Order BSA-free format for coating),Flow cytometry: 1-2ug/million cells,Immunohistochemistry (FFPE): 1-2ug/ml for 30 min at RT
Expiration Date	12 months from date of receipt.



Flow cytometry testing of PFA-fixed huma...



IHC staining of FFPE human colon tissue ...



Analysis of a HuProt (TM) microarray con...