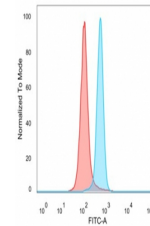


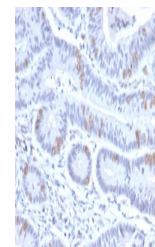
## Product Datasheet

### BRAF35 Antibody / HMG20B (orb1824788)

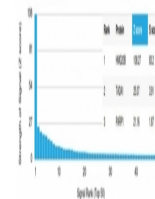
<b>Description</b>	Required for correct progression through G2 phase of the cell cycle and entry into mitosis. Required...
<b>Species/Host</b>	Mouse
<b>Reactivity</b>	Human
<b>Conjugation</b>	Unconjugated
<b>Tested Applications</b>	ELISA, FACS, IHC-P
<b>Immunogen</b>	A synthetic peptide corresponding to human SMARCE1-related protein was used as the immunogen for the HMG20B antibody.
<b>Storage</b>	Aliquot the HMG20B antibody and store frozen at -20°C or colder. Avoid repeated freeze-thaw cycles.
<b>Note</b>	For research use only
<b>Formula</b>	1 mg/ml in 1X PBS; BSA free, sodium azide free
<b>Isotype</b>	Mouse IgG1, kappa
<b>Clonality</b>	Monoclonal
<b>Uniprot ID</b>	<b>Q9P0W2</b>
<b>Hazard Information</b>	This HMG20B antibody is available for research use only.
<b>Dilution Range</b>	ELISA (Order BSA-free format for coating),Flow cytometry: 1-2ug/million cells,Immunohistochemistry (FFPE): 1-2ug/ml for 30 min at RT
<b>Expiration Date</b>	12 months from date of receipt.



Flow cytometry testing of PFA-fixed huma...



IHC staining of FFPE human colon tissue ...



Analysis of a HuProt (TM) microarray con...