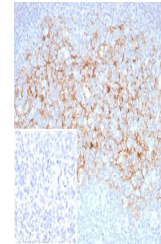


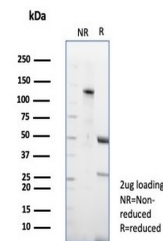
Product Datasheet

CD23 Antibody (orb1824765)

| | |
|----------------------------|---------------------------------------------------------------------------------------------------------------------------------------------|
| Description | CD23 (FCE2) is a type II integral membrane glycoprotein that is expressed on mature B cells, monocy... |
| Species/Host | Rabbit |
| Reactivity | Human |
| Conjugation | Unconjugated |
| Tested Applications | IHC-P |
| Immunogen | A recombinant partial protein sequence (within amino acids 221-321) from the human protein was used as the immunogen for the CD23 antibody. |
| Storage | Aliquot the CD23 antibody and store frozen at -20°C or colder. Avoid repeated freeze-thaw cycles. |
| Note | For research use only |
| Formula | 0.2 mg/ml in 1X PBS with 0.1 mg/ml BSA (US sourced), 0.05% sodium azide |
| Isotype | Rabbit IgG, kappa |
| Clonality | Recombinant |
| Uniprot ID | P06734 |
| Hazard Information | This CD23 antibody is available for research use only. |
| Dilution Range | Immunohistochemistry (FFPE): 1-2ug/ml for 30 min at RT |
| Expiration Date | 12 months from date of receipt. |



IHC staining of FFPE human tonsil tissue...



SDS-PAGE analysis of purified, BSA-free ...