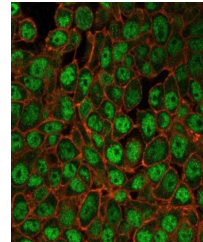


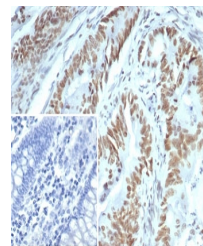
Product Datasheet

USF2 Antibody / Upstream stimulatory factor 2 (orb1824712)

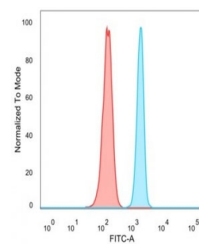
Description	The ubiquitously expressed cellular upstream stimulatory factor (USF) consists of USF-1 and USF-2 po...
Species/Host	Mouse
Reactivity	Human
Conjugation	Unconjugated
Tested Applications	FACS, IF, IHC-P
Immunogen	A recombinant partial protein sequence (within amino acids 220-346) from the human protein was used as the immunogen for the Upstream stimulatory factor 2 antibody.
Storage	Aliquot the Upstream stimulatory factor 2 antibody and store frozen at -20°C or colder. Avoid repeated freeze-thaw cycles.
Note	For research use only
Formula	0.2 mg/ml in 1X PBS with 0.1 mg/ml BSA (US sourced), 0.05% sodium azide
Isotype	Mouse IgG2c, kappa
Clonality	Monoclonal
Uniprot ID	Q15853
Hazard Information	This Upstream stimulatory factor 2 antibody is available for research use only.
Dilution Range	Flow cytometry: 1-2ug/million cells, Immunofluorescence: 1-2ug/ml, Immunohistochemistry (FFPE): 1-2ug/ml for 30 min at RT
Expiration Date	12 months from date of receipt.



Immunofluorescent staining of PFA-fixed ...



IHC staining of FFPE human colon carcino...



Flow cytometry testing of PFA-fixed huma...