

## Product Datasheet

### CEACAM1 Antibody / BGP-1 (orb1824700)

**Description** Carcinoembryonic antigen (CEA) is one of the most commonly used tumor markers in serum immunoassay d...

**Species/Host** Mouse

**Reactivity** Human

**Conjugation** Unconjugated

**Tested Applications** IHC-P

**Immunogen** A recombinant partial protein sequence (within amino acids 50-250) from the human protein was used as the immunogen for the CEACAM1 antibody.

**Storage** Aliquot the CEACAM1 antibody and store frozen at -20°C or colder. Avoid repeated freeze-thaw cycles.

**Note** For research use only

**Formula** 0.2 mg/ml in 1X PBS with 0.1 mg/ml BSA (US sourced), 0.05% sodium azide

**Isotype** Mouse IgG2a, kappa

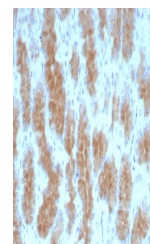
**Clonality** Monoclonal

**Uniprot ID** **P13688**

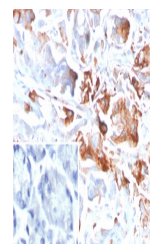
**Hazard Information** This CEACAM1 antibody is available for research use only.

**Dilution Range** Immunohistochemistry (FFPE): 1-2ug/ml for 30 min at RT

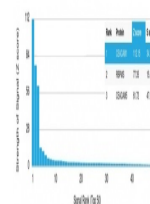
**Expiration Date** 12 months from date of receipt.



IHC staining of FFPE human stomach tissu...



IHC staining of FFPE human stomach tissu...



Analysis of a HuProt (TM) microarray con...