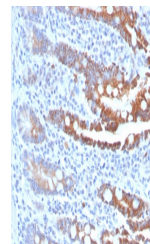


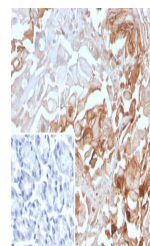
Product Datasheet

CEACAM1 Antibody / BGP-1 (orb1824697)

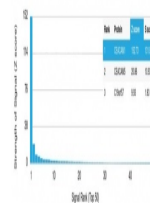
Description	Carcinoembryonic antigen (CEA) is one of the most commonly used tumor markers in serum immunoassay d...
Species/Host	Mouse
Reactivity	Human
Conjugation	Unconjugated
Tested Applications	IHC-P
Immunogen	A recombinant partial protein sequence (within amino acids 50-250) from the human protein was used as the immunogen for the BGP-1 antibody.
Storage	Aliquot the BGP-1 antibody and store frozen at -20°C or colder. Avoid repeated freeze-thaw cycles.
Note	For research use only
Formula	0.2 mg/ml in 1X PBS with 0.1 mg/ml BSA (US sourced), 0.05% sodium azide
Isotype	Mouse IgG2a, kappa
Clonality	Monoclonal
Uniprot ID	P13688
Hazard Information	This BGP-1 antibody is available for research use only.
Dilution Range	Immunohistochemistry (FFPE): 1-2ug/ml for 30 min at RT
Expiration Date	12 months from date of receipt.



IHC staining of FFPE human small intestine...



IHC staining of FFPE human stomach tissue...



Analysis of a HuProt (TM) microarray con...