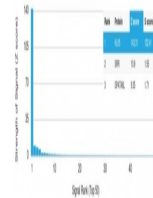


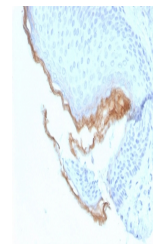
Product Datasheet

Kallikrein 5 Antibody / KLK5 (orb1824685)

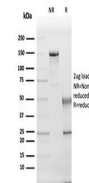
Description	Kallikreins (KLKs) belong to the serine protease family of proteolytic enzymes. Human pancreatic/ren...
Species/Host	Mouse
Reactivity	Human
Conjugation	Unconjugated
Tested Applications	IHC-P
Immunogen	A recombinant fragment of human KLK5 protein (within amino acids 36-177) was used as the immunogen for the Kallikrein 5 antibody.
Storage	Aliquot the Kallikrein 5 antibody and store frozen at -20°C or colder. Avoid repeated freeze-thaw cycles.
Note	For research use only
Formula	0.2 mg/ml in 1X PBS with 0.1 mg/ml BSA (US sourced), 0.05% sodium azide
Isotype	Mouse IgG2b, kappa
Clonality	Monoclonal
Uniprot ID	Q9Y337
Hazard Information	This Kallikrein 5 antibody is available for research use only.
Dilution Range	Immunohistochemistry (FFPE): 1-2ug/ml for 30 min at RT
Expiration Date	12 months from date of receipt.



Analysis of a HuProt (TM) microarray con...



IHC staining of FFPE human skin tissue w...



SDS-PAGE analysis of purified, BSA-free ...