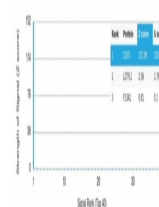


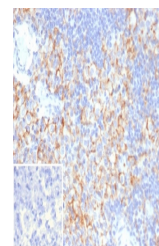
Product Datasheet

CD33 Antibody (orb1824680)

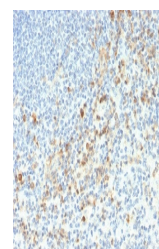
Description	Recognizes a 67kDa glycoprotein, which is identified as CD33. It is a transmembrane protein of the s...
Species/Host	Mouse
Reactivity	Human
Conjugation	Unconjugated
Tested Applications	IHC-P
Immunogen	A recombinant partial protein sequence (within amino acids 1-250) from the human protein was used as the immunogen for the SIGLEC3 antibody.
Storage	Aliquot the SIGLEC3 antibody and store frozen at -20°C or colder. Avoid repeated freeze-thaw cycles.
Note	For research use only
Formula	1 mg/ml in 1X PBS; BSA free, sodium azide free
Isotype	Mouse IgG2b, kappa
Clonality	Monoclonal
Uniprot ID	P20138
Hazard Information	This SIGLEC3 antibody is available for research use only.
Dilution Range	Immunohistochemistry (FFPE): 1-2ug/ml for 30 min at RT
Expiration Date	12 months from date of receipt.



Analysis of a HuProt (TM) microarray con...



IHC staining of FFPE human lymph node ti...



IHC staining of FFPE human spleen tissue...