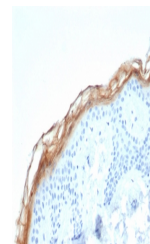


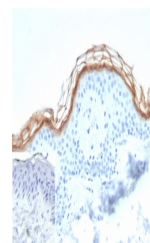
Product Datasheet

Kallikrein 7 Antibody / KLK7 (orb1824672)

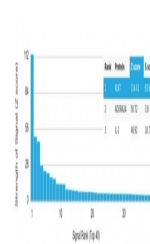
Description	Kallikreins (KLKs) belong to the serine protease family of proteolytic enzymes. Human pancreatic/ren...
Species/Host	Mouse
Reactivity	Human
Conjugation	Unconjugated
Tested Applications	IHC-P
Immunogen	A recombinant fragment of human KLK7 protein (within amino acids 1-200) was used as the immunogen for the KLK7 antibody.
Storage	Aliquot the KLK7 antibody and store frozen at -20°C or colder. Avoid repeated freeze-thaw cycles.
Note	For research use only
Formula	0.2 mg/ml in 1X PBS with 0.1 mg/ml BSA (US sourced), 0.05% sodium azide
Isotype	Mouse IgG2b, kappa
Clonality	Monoclonal
Uniprot ID	P49862
Hazard Information	This KLK7 antibody is available for research use only.
Dilution Range	Immunohistochemistry (FFPE): 1-2ug/ml for 30 min at RT
Expiration Date	12 months from date of receipt.



IHC staining of FFPE human skin tissue w...



IHC staining of FFPE human skin tissue w...



Analysis of a HuProt (TM) microarray con...