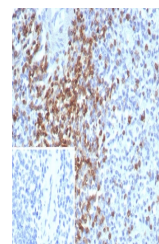


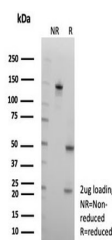
## Product Datasheet

### CD2 Antibody (orb1824670)

|                            |   |
|----------------------------|---|
| <b>Description</b>         | CD2 is mainly present on the surface of mature T cells and NK cell membranes, while B cells are usua...                     |
| <b>Species/Host</b>        | Rabbit  |
| <b>Reactivity</b>          | Human   |
| <b>Conjugation</b>         | Unconjugated  |
| <b>Tested Applications</b> | IHC-P   |
| <b>Immunogen</b>           | A recombinant fragment corresponding to the N-terminal of human CD2 protein was used as the immunogen for the CD2 antibody. |
| <b>Storage</b>             | Aliquot the CD2 antibody and store frozen at -20°C or colder. Avoid repeated freeze-thaw cycles.                            |
| <b>Note</b>                | For research use only   |
| <b>Formula</b>             | 0.2 mg/ml in 1X PBS with 0.1 mg/ml BSA (US sourced), 0.05% sodium azide   |
| <b>Isotype</b>             | Rabbit IgG, kappa   |
| <b>Clonality</b>           | Recombinant   |
| <b>Uniprot ID</b>          | <b>P06729</b>   |
| <b>Hazard Information</b>  | This CD2 antibody is available for research use only.   |
| <b>Dilution Range</b>      | Immunohistochemistry (FFPE): 1-2ug/ml for 30 min at RT  |
| <b>Expiration Date</b>     | 12 months from date of receipt.   |



IHC staining of FFPE human spleen tissue...



SDS-PAGE analysis of purified, BSA-free ...