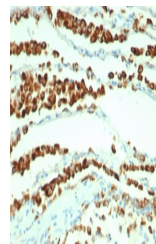


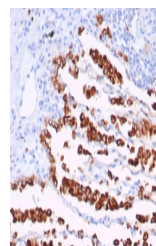
Product Datasheet

Napsin A Antibody (orb1824657)

Description	Napsin is a pepsin-like aspartic proteinase connected with maturation of surfactant protein B. There ...
Species/Host	Mouse
Reactivity	Human
Conjugation	Unconjugated
Tested Applications	IHC-P
Immunogen	A recombinant partial protein sequence (within amino acids 50-150) from the human protein was used as the immunogen for the recombinant NAPSA antibody antibody.
Storage	Aliquot the recombinant NAPSA antibody antibody and store frozen at -20°C or colder. Avoid repeated freeze-thaw cycles.
Note	For research use only
Formula	0.2 mg/ml in 1X PBS with 0.1 mg/ml BSA (US sourced), 0.05% sodium azide
Isotype	Mouse IgG1, kappa
Clonality	Recombinant
Uniprot ID	O96009
Hazard Information	This recombinant NAPSA antibody is available for research use only.
Dilution Range	Immunohistochemistry (FFPE): 1-2ug/ml for 30 min at RT
Expiration Date	12 months from date of receipt.



IHC staining of FFPE human lung adenocar...



IHC staining of FFPE human lung adenocar...