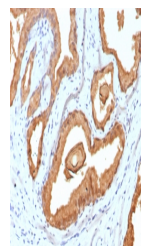


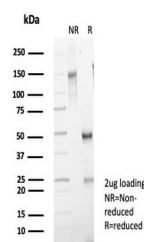
Product Datasheet

PSA Antibody / Prostate Specific Antigen (orb1824653)

Description	Recognizes a single protein of 33-34kDa, identified as the prostate specific antigen (PSA). This mAb...
Species/Host	Mouse
Reactivity	Human
Conjugation	Unconjugated
Tested Applications	IHC-P
Immunogen	A recombinant partial protein sequence (within amino acids 150-250) from the human protein was used as the immunogen for the Prostate Specific Antigen antibody.
Storage	Aliquot the Prostate Specific Antigen antibody and store frozen at -20°C or colder. Avoid repeated freeze-thaw cycles.
Note	For research use only
Formula	1 mg/ml in 1X PBS; BSA free, sodium azide free
Isotype	Mouse IgG1, kappa
Clonality	Recombinant
Uniprot ID	P07288
Hazard Information	This Prostate Specific Antigen antibody is available for research use only.
Dilution Range	Immunohistochemistry (FFPE): 1-2ug/ml for 30 min at RT
Expiration Date	12 months from date of receipt.



IHC staining of FFPE human prostate carc...



SDS-PAGE analysis of purified, BSA-free ...