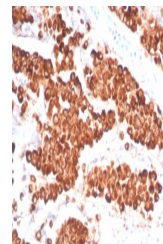


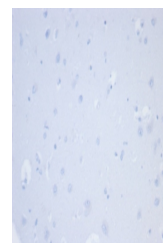
## Product Datasheet

### Napsin A Antibody (orb1824652)

<b>Description</b>	Napsin is a pepsin-like aspartic proteinase connected with maturation of surfactant protein B. There ...
<b>Species/Host</b>	Rabbit
<b>Reactivity</b>	Human
<b>Conjugation</b>	Unconjugated
<b>Tested Applications</b>	IHC-P, WB
<b>Immunogen</b>	A recombinant partial protein sequence (within amino acids 50-150) from the human protein was used as the immunogen for the Napsin A antibody.
<b>Storage</b>	Aliquot the Napsin A antibody and store frozen at -20°C or colder. Avoid repeated freeze-thaw cycles.
<b>Note</b>	For research use only
<b>Formula</b>	0.2 mg/ml in 1X PBS with 0.1 mg/ml BSA (US sourced), 0.05% sodium azide
<b>Isotype</b>	Rabbit IgG, kappa
<b>Clonality</b>	Recombinant
<b>Uniprot ID</b>	<b>O96009</b>
<b>Hazard Information</b>	This Napsin A antibody is available for research use only.
<b>Dilution Range</b>	Western blot: 1-2ug/ml, Immunohistochemistry (FFPE): 1-2ug/ml for 30 min at RT
<b>Expiration Date</b>	12 months from date of receipt.



IHC staining of FFPE human lung adenocar...



Negative control: IHC testing of FFPE hu...