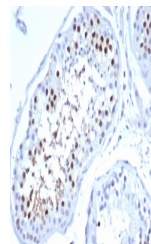


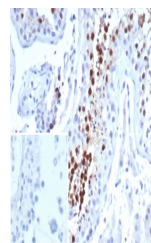
## Product Datasheet

### KIF2C Antibody / MCAK (orb1824640)

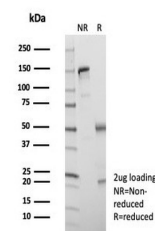
|                            |   |
|----------------------------|---|
| <b>Description</b>         | Kinesin family member 2c (KIF2C), alternately known as mitotic centromere associated kinesin (MCAK),...   |
| <b>Species/Host</b>        | Mouse   |
| <b>Reactivity</b>          | Human   |
| <b>Conjugation</b>         | Unconjugated  |
| <b>Tested Applications</b> | IHC-P   |
| <b>Immunogen</b>           | A recombinant partial protein sequence (within amino acids 500-700) from the human protein was used as the immunogen for the Kinesin-like protein 6 antibody. |
| <b>Storage</b>             | Aliquot the Kinesin-like protein 6 antibody and store frozen at -20°C or colder. Avoid repeated freeze-thaw cycles.   |
| <b>Note</b>                | For research use only   |
| <b>Formula</b>             | 0.2 mg/ml in 1X PBS with 0.1 mg/ml BSA (US sourced), 0.05% sodium azide   |
| <b>Isotype</b>             | Mouse IgG, kappa  |
| <b>Clonality</b>           | Monoclonal  |
| <b>Uniprot ID</b>          | <a href="#">Q99661</a>  |
| <b>Hazard Information</b>  | This Kinesin-like protein 6 antibody is available for research use only.  |
| <b>Dilution Range</b>      | Immunohistochemistry (FFPE): 1-2ug/ml for 30 min at RT  |
| <b>Expiration Date</b>     | 12 months from date of receipt.   |



IHC staining of FFPE human testis tissue...



IHC staining of FFPE human testis tissue...



SDS-PAGE analysis of purified, BSA-free ...