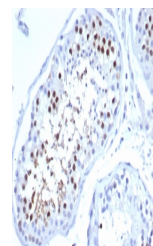


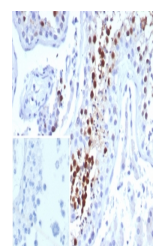
Product Datasheet

KIF2C Antibody / MCAK (orb1824639)

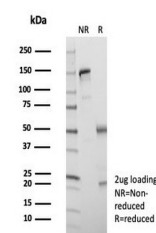
Description	Kinesin family member 2c (KIF2C), alternately known as mitotic centromere associated kinesin (MCAK),...
Species/Host	Mouse
Reactivity	Human
Conjugation	Unconjugated
Tested Applications	IHC-P
Immunogen	A recombinant partial protein sequence (within amino acids 500-700) from the human protein was used as the immunogen for the Kinesin-like protein 6 antibody.
Storage	Aliquot the Kinesin-like protein 6 antibody and store frozen at -20°C or colder. Avoid repeated freeze-thaw cycles.
Note	For research use only
Formula	0.2 mg/ml in 1X PBS with 0.1 mg/ml BSA (US sourced), 0.05% sodium azide
Isotype	Mouse IgG, kappa
Clonality	Monoclonal
Uniprot ID	Q99661
Hazard Information	This Kinesin-like protein 6 antibody is available for research use only.
Dilution Range	Immunohistochemistry (FFPE): 1-2ug/ml for 30 min at RT
Expiration Date	12 months from date of receipt.



IHC staining of FFPE human testis tissue...



IHC staining of FFPE human testis tissue...



SDS-PAGE analysis of purified, BSA-free ...