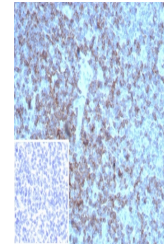


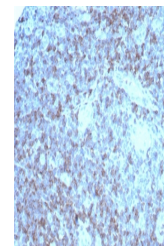
Product Datasheet

CD2 Antibody (orb1824624)

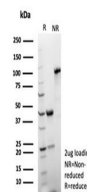
Description	CD2 is mainly present on the surface of mature T cells and NK cell membranes, while B cells are usua...
Species/Host	Mouse
Reactivity	Human
Conjugation	Unconjugated
Tested Applications	IHC-P
Immunogen	A recombinant fragment of the human protein was used as the immunogen for the recombinant LFA-2 antibody.
Storage	Aliquot the recombinant LFA-2 antibody and store frozen at -20°C or colder. Avoid repeated freeze-thaw cycles.
Note	For research use only
Formula	0.2 mg/ml in 1X PBS with 0.1 mg/ml BSA (US sourced), 0.05% sodium azide
Isotype	Mouse IgG1, kappa
Clonality	Recombinant
Uniprot ID	P06729
Hazard Information	This recombinant LFA-2 antibody is available for research use only.
Dilution Range	Immunohistochemistry (FFPE): 1-2ug/ml for 30 min at RT
Expiration Date	12 months from date of receipt.



IHC staining of FFPE human tonsil tissue...



IHC staining of FFPE human tonsil tissue...



SDS-PAGE analysis of purified, BSA-free ...