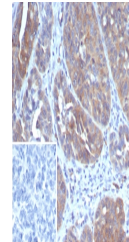


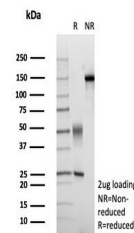
Product Datasheet

GCLM Antibody / Glutamate-Cysteine Ligase Regulatory Subunit (orb1824609)

Description	g-glutamylcysteine synthetase (g-GCS) is the rate limiting enzyme for glutathione (L-g-glutamyl-L-cy...
Species/Host	Mouse
Reactivity	Human
Conjugation	Unconjugated
Tested Applications	IHC-P
Immunogen	Recombinant full-length human GLCLR protein was used as the immunogen for the GCLM antibody.
Storage	Aliquot the GLCLR antibody and store frozen at -20°C or colder. Avoid repeated freeze-thaw cycles.
Note	For research use only
Formula	0.2 mg/ml in 1X PBS with 0.1 mg/ml BSA (US sourced), 0.05% sodium azide
Isotype	Mouse IgG2a, kappa
Clonality	Monoclonal
Uniprot ID	P48507
Hazard Information	This GLCLR antibody is available for research use only.
Dilution Range	Immunohistochemistry (FFPE): 1-2ug/ml for 30 min at RT
Expiration Date	12 months from date of receipt.



IHC staining of FFPE human ovarian cancer...



SDS-PAGE analysis of purified, BSA-free ...