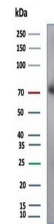


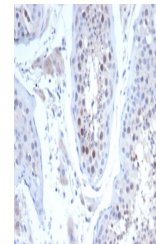
## Product Datasheet

### KIF2C Antibody / MCAK (orb1824568)

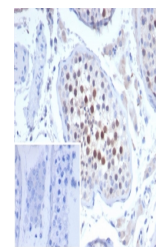
<b>Description</b>	Kinesin family member 2c (KIF2C), alternately known as mitotic centromere associated kinesin (MCAK) ...
<b>Species/Host</b>	Mouse
<b>Reactivity</b>	Human
<b>Conjugation</b>	Unconjugated
<b>Tested Applications</b>	IHC-P, WB
<b>Immunogen</b>	A recombinant partial protein sequence (within amino acids 500-700) from the human protein was used as the immunogen for the Kinesin like protein 6 antibody.
<b>Storage</b>	Aliquot the Kinesin like protein 6 antibody and store frozen at -20°C or colder. Avoid repeated freeze-thaw cycles.
<b>Note</b>	For research use only
<b>Formula</b>	0.2 mg/ml in 1X PBS with 0.1 mg/ml BSA (US sourced), 0.05% sodium azide
<b>Isotype</b>	Mouse IgG2b, kappa
<b>Clonality</b>	Monoclonal
<b>Uniprot ID</b>	<a href="#">Q99661</a>
<b>Hazard Information</b>	This Kinesin like protein 6 antibody is available for research use only.
<b>Dilution Range</b>	Western blot: 1-2ug/ml, Immunohistochemistry (FFPE): 1-2ug/ml for 30 min at RT
<b>Expiration Date</b>	12 months from date of receipt.



Western blot testing of human testis tis...



IHC staining of FFPE human testis tissue...



IHC staining of FFPE human testis tissue...