

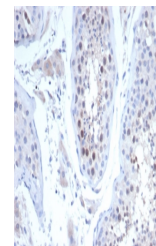
Product Datasheet

KIF2C Antibody / MCAK (orb1824567)

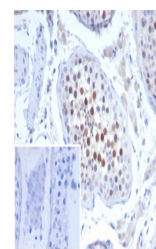
Description	Kinesin family member 2c (KIF2C), alternately known as mitotic centromere associated kinesin (MCAK) ...
Species/Host	Mouse
Reactivity	Human
Conjugation	Unconjugated
Tested Applications	IHC-P, WB
Immunogen	A recombinant partial protein sequence (within amino acids 500-700) from the human protein was used as the immunogen for the Kinesin like protein 6 antibody.
Storage	Aliquot the Kinesin like protein 6 antibody and store frozen at -20°C or colder. Avoid repeated freeze-thaw cycles.
Note	For research use only
Formula	0.2 mg/ml in 1X PBS with 0.1 mg/ml BSA (US sourced), 0.05% sodium azide
Isotype	Mouse IgG2b, kappa
Clonality	Monoclonal
Uniprot ID	Q99661
Hazard Information	This Kinesin like protein 6 antibody is available for research use only.
Dilution Range	Western blot: 1-2ug/ml, Immunohistochemistry (FFPE): 1-2ug/ml for 30 min at RT
Expiration Date	12 months from date of receipt.



Western blot testing of human testis tis...



IHC staining of FFPE human testis tissue...



IHC staining of FFPE human testis tissue...