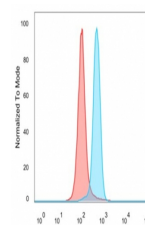


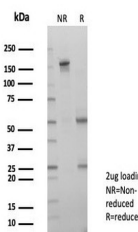
Product Datasheet

LIN28A Antibody (orb1824531)

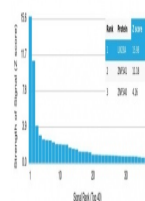
Description	LIN-28 is a highly conserved, RNA-binding, cytoplasmic protein. It consists of a cold shock domain a...
Species/Host	Mouse
Reactivity	Human
Conjugation	Unconjugated
Tested Applications	FACS
Immunogen	A recombinant partial protein sequence (within amino acids 134-187) from the human protein was used as the immunogen for the LIN28A antibody.
Storage	Aliquot the LIN28A antibody and store frozen at -20°C or colder. Avoid repeated freeze-thaw cycles.
Note	For research use only
Formula	0.2 mg/ml in 1X PBS with 0.1 mg/ml BSA (US sourced), 0.05% sodium azide
Isotype	Mouse IgG2a
Clonality	Monoclonal
Uniprot ID	Q9H9Z2
Hazard Information	This LIN28A antibody is available for research use only.
Dilution Range	Flow cytometry: 1-2ug/million cells
Expiration Date	12 months from date of receipt.



Flow cytometry testing of PFA-fixed huma...



SDS-PAGE analysis of purified, BSA-free ...



Analysis of a HuProt (TM) microarray con...