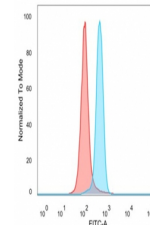


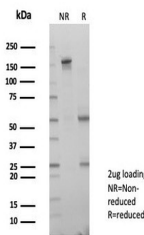
## Product Datasheet

### LIN28A Antibody (orb1824530)

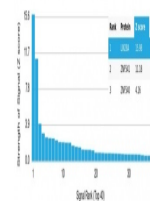
<b>Description</b>	LIN-28 is a highly conserved, RNA-binding, cytoplasmic protein. It consists of a cold shock domain a...
<b>Species/Host</b>	Mouse
<b>Reactivity</b>	Human
<b>Conjugation</b>	Unconjugated
<b>Tested Applications</b>	FACS
<b>Immunogen</b>	A recombinant partial protein sequence (within amino acids 134-187) from the human protein was used as the immunogen for the LIN28A antibody.
<b>Storage</b>	Aliquot the LIN28A antibody and store frozen at -20°C or colder. Avoid repeated freeze-thaw cycles.
<b>Note</b>	For research use only
<b>Formula</b>	1 mg/ml in 1X PBS; BSA free, sodium azide free
<b>Isotype</b>	Mouse IgG2a
<b>Clonality</b>	Monoclonal
<b>Uniprot ID</b>	<a href="#">Q9H9Z2</a>
<b>Hazard Information</b>	This LIN28A antibody is available for research use only.
<b>Dilution Range</b>	Flow cytometry: 1-2ug/million cells
<b>Expiration Date</b>	12 months from date of receipt.



Flow cytometry testing of PFA-fixed huma...



SDS-PAGE analysis of purified, BSA-free ...



Analysis of a HuProt (TM) microarray con...