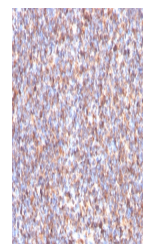


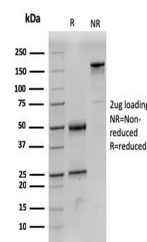
Product Datasheet

SDHB Antibody / Succinate dehydrogenase B (orb1824507)

Description	Succinate dehydrogenase (SDH) is Complex II in the mitochondria, vital for mitochondrial electron tr...
Species/Host	Mouse
Reactivity	Human
Conjugation	Unconjugated
Tested Applications	IF, IHC-P
Immunogen	A recombinant human SDHB protein fragment (within amino acids 165-273) was used as the immunogen for the Succinate dehydrogenase B antibody.
Storage	Aliquot the Succinate dehydrogenase B antibody and store frozen at -20°C or colder. Avoid repeated freeze-thaw cycles.
Note	For research use only
Formula	0.2 mg/ml in 1X PBS with 0.1 mg/ml BSA (US sourced), 0.05% sodium azide
Isotype	Mouse IgG2, kappa
Clonality	Monoclonal
Uniprot ID	P21912
Hazard Information	This Succinate dehydrogenase B antibody is available for research use only.
Dilution Range	Immunofluorescence: 1-2ug/ml, Immunohistochemistry (FFPE): 1-2ug/ml for 30 min at RT
Expiration Date	12 months from date of receipt.



IHC staining of FFPE human tonsil tissue...



SDS-PAGE analysis of purified, BSA-free ...