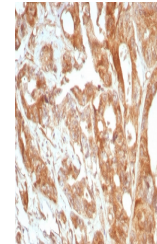


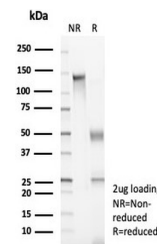
Product Datasheet

Podoplanin Antibody / gp36 (orb1824489)

Description	It recognizes a muco-protein of 38-43kDa, which is identified as Podoplanin (PDPN), also called Glyc...
Species/Host	Rabbit
Reactivity	Human
Conjugation	Unconjugated
Tested Applications	ELISA, IF, IHC-P
Immunogen	A recombinant partial protein sequence (within amino acids 1-150) from the human protein was used as the immunogen for the Glycoprotein 36 antibody.
Storage	Aliquot the Glycoprotein 36 antibody and store frozen at -20°C or colder. Avoid repeated freeze-thaw cycles.
Note	For research use only
Formula	0.2 mg/ml in 1X PBS with 0.1 mg/ml BSA (US sourced), 0.05% sodium azide
Isotype	Rabbit IgG, kappa
Clonality	Recombinant
Uniprot ID	Q86YL7
Hazard Information	This Glycoprotein 36 antibody is available for research use only.
Dilution Range	ELISA (Order BSA-free format for coating), Immunofluorescence: 1-2ug/ml, Immunohistochemistry (FFPE): 1-2ug/ml for 30 min at RT
Expiration Date	12 months from date of receipt.



IHC staining of FFPE human prostate tiss...



SDS-PAGE analysis of purified, BSA-free ...