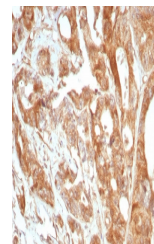


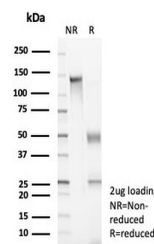
Product Datasheet

Podoplanin Antibody / gp36 (orb1824488)

Description	It recognizes a muco-protein of 38-43kDa, which is identified as Podoplanin (PDPN), also called Glyc...
Species/Host	Rabbit
Reactivity	Human
Conjugation	Unconjugated
Tested Applications	ELISA, IF, IHC-P
Immunogen	A recombinant partial protein sequence (within amino acids 1-150) from the human protein was used as the immunogen for the Glycoprotein 36 antibody.
Storage	Aliquot the Glycoprotein 36 antibody and store frozen at -20°C or colder. Avoid repeated freeze-thaw cycles.
Note	For research use only
Formula	1 mg/ml in 1X PBS; BSA free, sodium azide free
Isotype	Rabbit IgG, kappa
Clonality	Recombinant
Uniprot ID	Q86YL7
Hazard Information	This Glycoprotein 36 antibody is available for research use only.
Dilution Range	ELISA (Order BSA-free format for coating), Immunofluorescence: 1-2ug/ml, Immunohistochemistry (FFPE): 1-2ug/ml for 30 min at RT
Expiration Date	12 months from date of receipt.



IHC staining of FFPE human prostate tiss...



SDS-PAGE analysis of purified, BSA-free ...