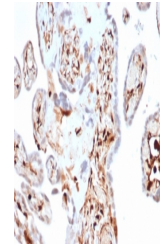


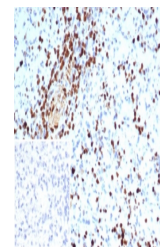
Product Datasheet

S100A4 Antibody / FSP1 (orb1824467)

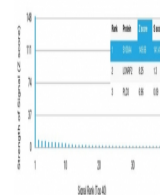
Description	S100A4 belongs to the S100 super-family of proteins containing 2 EF-hand calcium-binding domains. S1...
Species/Host	Mouse
Reactivity	Human
Conjugation	Unconjugated
Tested Applications	ELISA, IHC-P
Immunogen	A recombinant partial protein sequence (within amino acids 1-200) from the human protein was used as the immunogen for the S100A4 antibody.
Storage	Aliquot the S100A4 antibody and store frozen at -20°C or colder. Avoid repeated freeze-thaw cycles.
Note	For research use only
Formula	1 mg/ml in 1X PBS; BSA free, sodium azide free
Isotype	Mouse IgG, kappa
Clonality	Monoclonal
Uniprot ID	P26447
Hazard Information	This S100A4 antibody is available for research use only.
Dilution Range	ELISA (Order BSA-free format for coating), Immunohistochemistry (FFPE): 1-2ug/ml for 30 min at RT
Expiration Date	12 months from date of receipt.



IHC staining of FFPE human spleen tissue...



IHC staining of FFPE human spleen tissue...



Analysis of a HuProt (TM) microarray con...