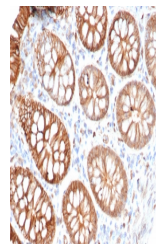


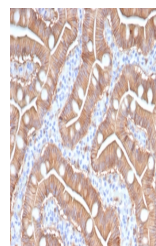
Product Datasheet

S100A16 Antibody (orb1824444)

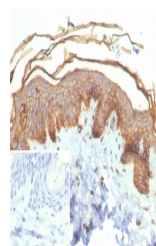
Description	The S-100 protein family consists of a group of calcium-binding proteins that are exclusively expres...
Species/Host	Mouse
Reactivity	Human
Conjugation	Unconjugated
Tested Applications	IHC-P
Immunogen	A recombinant partial protein sequence (within amino acids 1-103) from the human protein was used as the immunogen for the S100A16 antibody.
Storage	Aliquot the S100A16 antibody and store frozen at -20°C or colder. Avoid repeated freeze-thaw cycles.
Note	For research use only
Formula	0.2 mg/ml in 1X PBS with 0.1 mg/ml BSA (US sourced), 0.05% sodium azide
Isotype	Mouse IgG2, kappa
Clonality	Monoclonal
Uniprot ID	Q96FQ6
Hazard Information	This S100A16 antibody is available for research use only.
Dilution Range	Immunohistochemistry (FFPE): 1-2ug/ml for 30 min at RT
Expiration Date	12 months from date of receipt.



IHC staining of FFPE human colon carcinoma...



IHC staining of FFPE human duodenum tiss...



IHC staining of FFPE human skin tissue w...