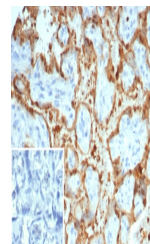


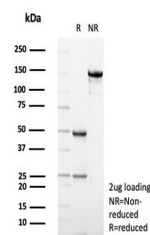
Product Datasheet

S100A12 Antibody / CGRP (orb1824398)

Description	S100A12 (CGRP) is a calcium-, zinc- and copper-binding protein which plays a prominent role in the r...
Species/Host	Mouse
Reactivity	Human
Conjugation	Unconjugated
Tested Applications	IHC-P
Immunogen	A recombinant partial protein sequence (within amino acids 1-95) from the human protein was used as the immunogen for the S100A12 antibody.
Storage	Aliquot the S100A12 antibody and store frozen at -20°C or colder. Avoid repeated freeze-thaw cycles.
Note	For research use only
Formula	1 mg/ml in 1X PBS; BSA free, sodium azide free
Isotype	Mouse IgG1, kappa
Clonality	Monoclonal
Uniprot ID	P80511
Hazard Information	This S100A12 antibody is available for research use only.
Dilution Range	Immunohistochemistry (FFPE): 1-2ug/ml for 30 min at RT
Expiration Date	12 months from date of receipt.



IHC staining of FFPE human placental tis...



SDS-PAGE analysis of purified, BSA-free ...