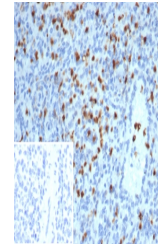


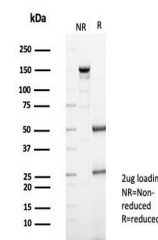
Product Datasheet

S100A13 Antibody (orb1824396)

Description	The S-100 protein family consists of a group of calcium-binding proteins, that exhibit cell and tiss...
Species/Host	Mouse
Reactivity	Human
Conjugation	Unconjugated
Tested Applications	IHC-P
Immunogen	A recombinant partial protein sequence (within amino acids 1-93) from the human protein was used as the immunogen for the S100 calcium-binding protein A13 antibody.
Storage	Aliquot the S100°Calcium-binding protein A13 antibody and store frozen at -20°C or colder. Avoid repeated freeze-thaw cycles.
Note	For research use only
Formula	0.2 mg/ml in 1X PBS with 0.1 mg/ml BSA (US sourced), 0.05% sodium azide
Isotype	Mouse IgG2b, kappa
Clonality	Monoclonal
Uniprot ID	Q99584
Hazard Information	This S100 calcium-binding protein A13 antibody is available for research use only.
Dilution Range	Immunohistochemistry (FFPE): 1-2ug/ml for 30 min at RT
Expiration Date	12 months from date of receipt.



IHC staining of FFPE human spleen tissue...



SDS-PAGE analysis of purified, BSA-free ...