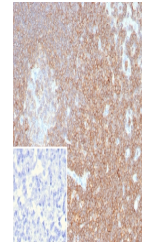


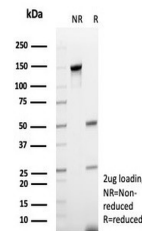
Product Datasheet

CD48 Antibody (Pan Leukocyte Marker) (orb1824376)

Description	Reacts with human CD48, a 45kDa glycosyl phosphatidyl-inositol (GPI)-anchored cell surface protein. C...
Species/Host	Mouse
Reactivity	Human
Conjugation	Unconjugated
Tested Applications	IHC-P
Immunogen	A recombinant partial protein sequence (within amino acids 1-200) from the human protein was used as the immunogen for the recombinant CD48 antibody.
Storage	Aliquot the recombinant CD48 antibody and store frozen at -20°C or colder. Avoid repeated freeze-thaw cycles.
Note	For research use only
Formula	0.2 mg/ml in 1X PBS with 0.1 mg/ml BSA (US sourced), 0.05% sodium azide
Isotype	Mouse IgG1, kappa
Clonality	Recombinant
Uniprot ID	P09326
Hazard Information	This recombinant CD48 antibody is available for research use only.
Dilution Range	Immunohistochemistry (FFPE): 1-2ug/ml for 30 min at RT
Expiration Date	12 months from date of receipt.



IHC staining of FFPE human lymph node tissue...



SDS-PAGE analysis of purified, BSA-free ...