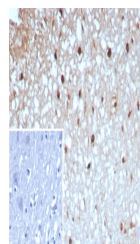


Product Datasheet

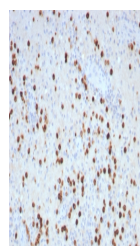
Glutamine Synthetase Antibody / GLUL (orb1824363)

Description	Glutamine synthetase (Gl Syn) forms a homo-octamer that serves as a catalyst for the amination of gl...
Species/Host	Rabbit
Reactivity	Human
Conjugation	Unconjugated
Tested Applications	IHC-P
Immunogen	A recombinant partial protein sequence (within amino acids 200-373) from the human protein was used as the immunogen for the Glutamine Synthetase antibody.
Storage	Aliquot the Glutamine Synthetase antibody and store frozen at -20°C or colder. Avoid repeated freeze-thaw cycles.
Note	For research use only
Formula	0.2 mg/ml in 1X PBS with 0.1 mg/ml BSA (US sourced), 0.05% sodium azide
Isotype	Rabbit IgG, kappa
Clonality	Recombinant
Uniprot ID	P15104
Hazard Information	This Glutamine Synthetase antibody is available for research use only.
Dilution Range	Immunohistochemistry (FFPE): 1-2ug/ml for 30 min at RT
Expiration Date	12 months from date of receipt.



IHC staining of FFPE human brain tissue

...



IHC staining of FFPE human brain tissue

...