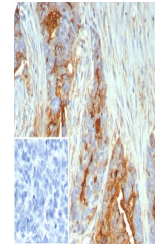


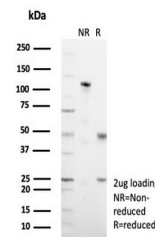
Product Datasheet

MUC1 Antibody / Mucin-1 (orb1824358)

Description	Mucin 1, cell surface associated (MUC1) or polymorphic epithelial mucin (PEM) is a protein encoded b...
Species/Host	Rabbit
Reactivity	Human
Conjugation	Unconjugated
Tested Applications	IHC-P
Immunogen	Recombinant full-length human MUC1 protein was used as the immunogen for the Mucin 1 antibody.
Storage	Aliquot the Mucin 1 antibody and store frozen at -20°C or colder. Avoid repeated freeze-thaw cycles.
Note	For research use only
Formula	0.2 mg/ml in 1X PBS with 0.1 mg/ml BSA (US sourced), 0.05% sodium azide
Isotype	Rabbit IgG, kappa
Clonality	Recombinant
Uniprot ID	P15941
Hazard Information	This Mucin 1 antibody is available for research use only.
Dilution Range	Immunohistochemistry (FFPE): 1-2ug/ml for 30 min at RT
Expiration Date	12 months from date of receipt.



IHC staining of FFPE human ovarian cancer...



SDS-PAGE analysis of purified, BSA-free ...