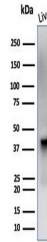


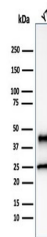
## Product Datasheet

# Glutamine Synthetase Antibody / GLUL (orb1824335)

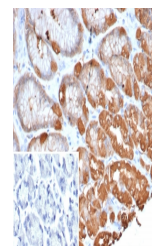
<b>Description</b>	Glutamine synthetase (Gl Syn) forms a homo-octamer that serves as a catalyst for the amination of gl...
<b>Species/Host</b>	Mouse
<b>Reactivity</b>	Canine, Human
<b>Conjugation</b>	Unconjugated
<b>Tested Applications</b>	IHC-P, WB
<b>Immunogen</b>	A recombinant partial protein sequence (within amino acids 50-250) from the human protein was used as the immunogen for the Glutamine Synthetase antibody.
<b>Storage</b>	Aliquot the Glutamine Synthetase antibody and store frozen at -20°C or colder. Avoid repeated freeze-thaw cycles.
<b>Note</b>	For research use only
<b>Formula</b>	1 mg/ml in 1X PBS; BSA free, sodium azide free
<b>Isotype</b>	Mouse IgG2b, kappa
<b>Clonality</b>	Monoclonal
<b>Uniprot ID</b>	<b>P15104</b>
<b>Hazard Information</b>	This Glutamine Synthetase antibody is available for research use only.
<b>Dilution Range</b>	Western blot: 1-2ug/ml, Immunohistochemistry (FFPE): 1-2ug/ml for 30 min at RT
<b>Expiration Date</b>	12 months from date of receipt.



Western blot testing of human liver tiss...



Western blot testing of human Y79 cell l...



IHC staining of FFPE human stomach tissu...