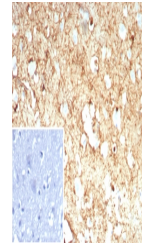


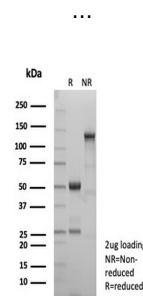
Product Datasheet

Glutamine Synthetase Antibody / GLUL (orb1824320)

Description	Glutamine synthetase (GI Syn) forms a homo-octamer that serves as a catalyst for the amination of gl...
Species/Host	Mouse
Reactivity	Human
Conjugation	Unconjugated
Tested Applications	IHC-P
Immunogen	A recombinant partial protein sequence (within amino acids 1-200) from the human protein was used as the immunogen for the Glutamine Synthetase antibody.
Storage	Aliquot the Glutamine Synthetase antibody and store frozen at -20°C or colder. Avoid repeated freeze-thaw cycles.
Note	For research use only
Formula	1 mg/ml in 1X PBS; BSA free, sodium azide free
Isotype	Mouse IgG1, kappa
Clonality	Recombinant
Uniprot ID	P15104
Hazard Information	This Glutamine Synthetase antibody is available for research use only.
Dilution Range	Immunohistochemistry (FFPE): 1-2ug/ml for 30 min at RT
Expiration Date	12 months from date of receipt.



IHC staining of FFPE human brain tissue



SDS-PAGE analysis of purified, BSA-free ...