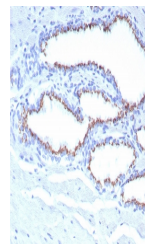


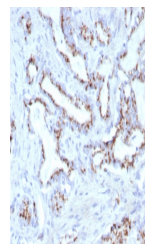
Product Datasheet

Prostein Antibody / SLC45A3 (orb1824246)

Description	Human prostein is a 553 aa protein identified by cDNA library subtraction and subsequent high-through...
Species/Host	Mouse
Reactivity	Human
Conjugation	Unconjugated
Tested Applications	IHC-P
Immunogen	A recombinant partial protein sequence (within amino acids 300-500) from the human protein was used as the immunogen for the SLC45A3 antibody.
Storage	Aliquot the SLC45A3 antibody and store frozen at -20°C or colder. Avoid repeated freeze-thaw cycles.
Note	For research use only
Formula	0.2 mg/ml in 1X PBS with 0.1 mg/ml BSA (US sourced), 0.05% sodium azide
Isotype	Mouse IgG1, kappa
Clonality	Monoclonal
Uniprot ID	Q96JT2
Hazard Information	This SLC45A3 antibody is available for research use only.
Dilution Range	Immunohistochemistry (FFPE): 1-2ug/ml for 30 min at RT
Expiration Date	12 months from date of receipt.



IHC staining of FFPE human prostate tiss...



IHC staining of FFPE human prostate tiss...