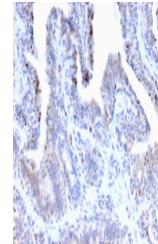


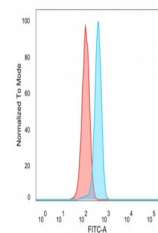
Product Datasheet

LRH1 Antibody / NR5A2 (orb1824241)

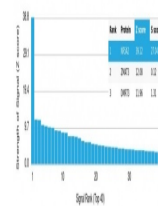
| | |
|----------------------------|---|
| Description | NR5A2 (nuclear receptor subfamily 5, group A, member 2), also designated B1-binding factor (B1F or B... |
| Species/Host | Mouse |
| Reactivity | Human |
| Conjugation | Unconjugated |
| Tested Applications | FACS, IHC-P |
| Immunogen | Recombinant human NR5A2 protein was used as the immunogen for the NR5A2 antibody. |
| Storage | Aliquot the NR5A2 antibody and store frozen at -20°C or colder. Avoid repeated freeze-thaw cycles. |
| Note | For research use only |
| Formula | 0.2 mg/ml in 1X PBS with 0.1 mg/ml BSA (US sourced), 0.05% sodium azide |
| Isotype | Mouse IgG2b |
| Clonality | Monoclonal |
| Uniprot ID | O00482 |
| Hazard Information | This NR5A2 antibody is available for research use only. |
| Dilution Range | Flow cytometry: 1-2ug/million cells, Immunohistochemistry (FFPE): 1-2ug/ml for 30 min at RT |
| Expiration Date | 12 months from date of receipt. |



IHC staining of FFPE human prostate cancer...



Flow cytometry testing of PFA-fixed huma...



Analysis of a HuProt (TM) microarray con...