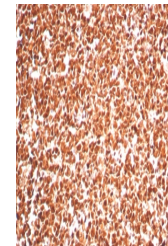


Product Datasheet

PCNA Antibody (orb1824193)

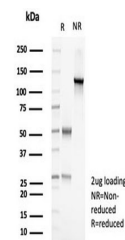
Description	Recognizes a non-histone protein of 36kDa, which is identified as proliferating cell nuclear antigen...
Species/Host	Rabbit
Reactivity	Human
Conjugation	Unconjugated
Tested Applications	IHC-P, WB
Immunogen	Recombinant full-length human protein was used as the immunogen for the Proliferating Cell Nuclear Antigen antibody.
Storage	Aliquot the Proliferating Cell Nuclear Antigen antibody and store frozen at -20°C or colder. Avoid repeated freeze-thaw cycles.
Note	For research use only
Formula	0.2 mg/ml in 1X PBS with 0.1 mg/ml BSA (US sourced), 0.05% sodium azide
Isotype	Rabbit IgG, kappa
Clonality	Recombinant
Uniprot ID	P12004
Hazard Information	This Proliferating Cell Nuclear Antigen antibody is available for research use only.
Dilution Range	Western blot: 1-2ug/ml, Immunohistochemistry (FFPE): 1-2ug/ml for 30 min at RT
Expiration Date	12 months from date of receipt.



IHC staining of FFPE human tonsil tissue...



Western blot testing of human Raji cell ...



SDS-PAGE analysis of purified, BSA-free ...