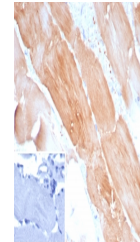


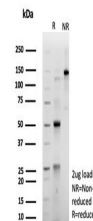
Product Datasheet

ACTN2 Antibody / Alpha Actinin 2 / Sarcomeric Alpha Actinin (orb1824158)

Description	Alpha actinins belong to the spectrin gene superfamily which represents a diverse group of cytoskele...
Species/Host	Rabbit
Reactivity	Human
Conjugation	Unconjugated
Tested Applications	IHC-P, WB
Immunogen	A portin of amino acids 557-692 from the human protein was used as the immunogen for the Sarcomeric Actinin Alpha 2 antibody.
Storage	Aliquot the Sarcomeric Actinin Alpha 2 antibody and store frozen at -20°C or colder. Avoid repeated freeze-thaw cycles.
Note	For research use only
Formula	1 mg/ml in 1X PBS; BSA free, sodium azide free
Isotype	Rabbit IgG, kappa
Clonality	Recombinant
Uniprot ID	P35609
Hazard Information	This Sarcomeric Actinin Alpha 2 antibody is available for research use only.
Dilution Range	Western blot: 1-2ug/ml, Immunohistochemistry (FFPE): 1-2ug/ml for 30 min at RT
Expiration Date	12 months from date of receipt.



IHC staining of FFPE human skeletal musc...



SDS-PAGE analysis of purified, BSA-free ...