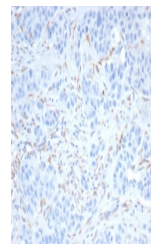


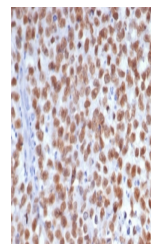
Product Datasheet

SALL4 Antibody / ZNF797 (orb1824103)

| | |
|----------------------------|---|
| Description | Sall3 (SALL3, sal-like 3) and Sall4 (SALL4, sal-like 4) are mammalian homologs of the Drosophila reg... |
| Species/Host | Rabbit |
| Reactivity | Human |
| Conjugation | Unconjugated |
| Tested Applications | IHC-P |
| Immunogen | A recombinant partial protein sequence (within amino acids 100-300) from the human protein was used as the immunogen for the Sal-like 4 antibody. |
| Storage | Aliquot the Sal-like 4 antibody and store frozen at -20°C or colder. Avoid repeated freeze-thaw cycles. |
| Note | For research use only |
| Formula | 0.2 mg/ml in 1X PBS with 0.1 mg/ml BSA (US sourced), 0.05% sodium azide |
| Isotype | Rabbit IgG, kappa |
| Clonality | Recombinant |
| Uniprot ID | Q9UJQ4 |
| Hazard Information | This Sal-like 4 antibody is available for research use only. |
| Dilution Range | Immunohistochemistry (FFPE): 1-2ug/ml for 30 min at RT |
| Expiration Date | 12 months from date of receipt. |



IHC staining of FFPE human kidney cancer...



IHC staining of FFPE human seminoma tiss...