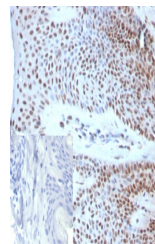


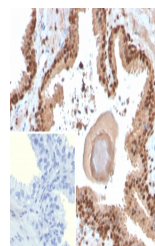
Product Datasheet

SOX18 Antibody (orb1824100)

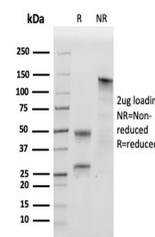
Description	Sox genes comprise a family of genes that are related to the mammalian sex determining gene SRY. The...
Species/Host	Mouse
Reactivity	Human
Conjugation	Unconjugated
Tested Applications	IHC-P
Immunogen	A recombinant human SOX18 protein fragment (within amino acids 50-250) was used as the immunogen for the SOX18 antibody.
Storage	Aliquot the SOX18 antibody and store frozen at -20°C or colder. Avoid repeated freeze-thaw cycles.
Note	For research use only
Formula	0.2 mg/ml in 1X PBS with 0.1 mg/ml BSA (US sourced), 0.05% sodium azide
Isotype	Mouse IgG2, kappa
Clonality	Monoclonal
Uniprot ID	P35713
Hazard Information	This SOX18 antibody is available for research use only.
Dilution Range	Immunohistochemistry (FFPE): 1-2ug/ml for 30 min at RT
Expiration Date	12 months from date of receipt.



IHC staining of FFPE human skin tissue w...



IHC staining of FFPE human prostate tiss...



SDS-PAGE analysis of purified, BSA-free ...