

---

## Product Datasheet

**MX1 Antibody / MxA / Myxovirus resistance protein  
1 (orb1824070)**

**Description**

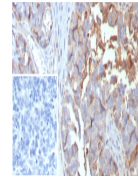
The Dynamin family of microtubule-associated



micro...

**Species/Host**

Mouse


**Reactivity**

Human

**Conjugation**

Unconjugated

**Tested Applications**

IHC-P

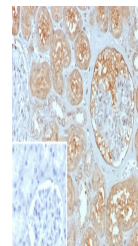
IHC staining of FFPE human ovarian cancer...

**Immunogen**

A recombinant partial protein sequence (within amino acids 400-592) from the human protein was used as the immunogen for the MX1 antibody.

**Storage**

Aliquot the MX1 antibody and store frozen at -20°C or colder. Avoid repeated freeze-thaw cycles.


**Note**

For research use only

**Formula**

0.2 mg/ml in 1X PBS with 0.1 mg/ml BSA (US sourced), 0.05% sodium azide

IHC staining of FFPE human kidney tissue...

**Isotype**

Mouse IgG2, kappa

**Clonality**

Monoclonal

**Uniprot ID**

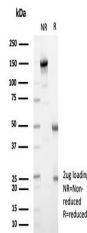
**P20591**

**Hazard Information**

This MX1 antibody is available for research use only.

**Dilution Range**

Immunohistochemistry (FFPE): 1-2ug/ml for 30 min at RT



SDS-PAGE analysis of purified, BSA-free ...

**Expiration Date**

12 months from date of receipt.