
Product Datasheet

**MX1 Antibody / MxA / Myxovirus resistance protein
1 (orb1824068)**

Description

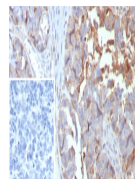
The Dynamin family of microtubule-associated



micro...

Species/Host

Mouse


Reactivity

Human

Conjugation

Unconjugated

Tested Applications

IHC-P

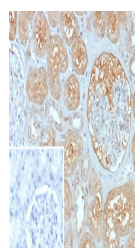
IHC staining of FFPE human ovarian cancer...

Immunogen

A recombinant partial protein sequence (within amino acids 400-592) from the human protein was used as the immunogen for the MX1 antibody.

Storage

Aliquot the MX1 antibody and store frozen at -20°C or colder. Avoid repeated freeze-thaw cycles.


Note

For research use only

Formula

1 mg/ml in 1X PBS; BSA free, sodium azide free

Isotype

Mouse IgG2, kappa

IHC staining of FFPE human kidney tissue...

Clonality

Monoclonal

Uniprot ID

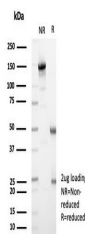
P20591

Hazard Information

This MX1 antibody is available for research use only.

Dilution Range

Immunohistochemistry (FFPE): 1-2ug/ml for 30 min at RT



SDS-PAGE analysis of purified, BSA-free ...

Expiration Date

12 months from date of receipt.