

---

## Product Datasheet

### **MIF Antibody / Macrophage migration inhibitory factor (orb1824031)**

**Description**

Macrophage migration inhibitory factor, known as


**Species/Host**

Mouse

**Reactivity**

Human

**Conjugation**

Unconjugated

**Tested Applications**

IHC-P, WB

IHC staining of FFPE human prostate tiss...

**Immunogen**

A recombinant fragment of human protein was used as the immunogen for the Macrophage migration inhibitory factor antibody.

**Storage**

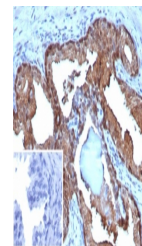
Aliquot the Macrophage migration inhibitory factor antibody and store frozen at -20°C or colder. Avoid repeated freeze-thaw cycles.

**Note**

For research use only

**Formula**

0.2 mg/ml in 1X PBS with 0.1 mg/ml BSA (US sourced), 0.05% sodium azide



IHC staining of FFPE human prostate tiss...

**Isotype**

Mouse IgG

**Clonality**

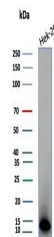
Monoclonal

**Uniprot ID**
**P14174**
**Hazard Information**

This MIF antibody is available for research use only.

**Dilution Range**

Western blot: 1-2ug/ml, Immunohistochemistry (FFPE): 1-2ug/ml for 30 min at RT



Western blot testing of human HEK293 cel...

**Expiration Date**

12 months from date of receipt.