
Product Datasheet

MIF Antibody / Macrophage migration inhibitory factor (orb1824030)

Description

Macrophage migration inhibitory factor, known as


Species/Host

Mouse

Reactivity

Human

Conjugation

Unconjugated

Tested Applications

IHC-P, WB

IHC staining of FFPE human prostate tiss...

Immunogen

A recombinant fragment of human protein was used as the immunogen for the Macrophage migration inhibitory factor antibody.

Storage

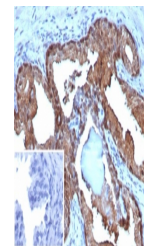
Aliquot the Macrophage migration inhibitory factor antibody and store frozen at -20°C or colder. Avoid repeated freeze-thaw cycles.

Note

For research use only

Formula

0.2 mg/ml in 1X PBS with 0.1 mg/ml BSA (US sourced), 0.05% sodium azide



IHC staining of FFPE human prostate tiss...

Isotype

Mouse IgG

Clonality

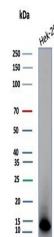
Monoclonal

Uniprot ID
P14174
Hazard Information

This MIF antibody is available for research use only.

Dilution Range

Western blot: 1-2ug/ml, Immunohistochemistry (FFPE): 1-2ug/ml for 30 min at RT



Western blot testing of human HEK293 cel...

Expiration Date

12 months from date of receipt.