

---

## Product Datasheet

### MIF Antibody / Macrophage migration inhibitory factor (orb1824025)

**Description**

Macrophage migration inhibitory factor, known as



**Species/Host**

Mouse

**Reactivity**

Human

**Conjugation**

Unconjugated

**Tested Applications**

IHC-P, WB

IHC staining of FFPE human prostate tiss...

**Immunogen**

A recombinant fragment of human protein was used as the immunogen for the Glycosylation inhibiting factor antibody.

**Storage**

Aliquot the Glycosylation inhibiting factor antibody and store frozen at -20°C or colder. Avoid repeated freeze-thaw cycles.

**Note**

For research use only

**Formula**

0.2 mg/ml in 1X PBS with 0.1 mg/ml BSA (US sourced), 0.05% sodium azide

**Isotype**

Mouse IgG

**Clonality**

Monoclonal

**Uniprot ID**

**P14174**

**Hazard Information**

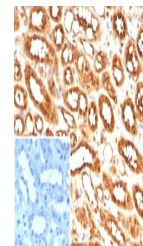
This Glycosylation inhibiting factor antibody is available for research use only.

**Dilution Range**

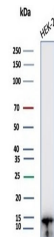
Western blot: 1-2ug/ml, Immunohistochemistry (FFPE): 1-2ug/ml for 30 min at RT

**Expiration Date**

12 months from date of receipt.



IHC staining of FFPE human kidney tissue...



Western blot testing of human HEK293 cel...